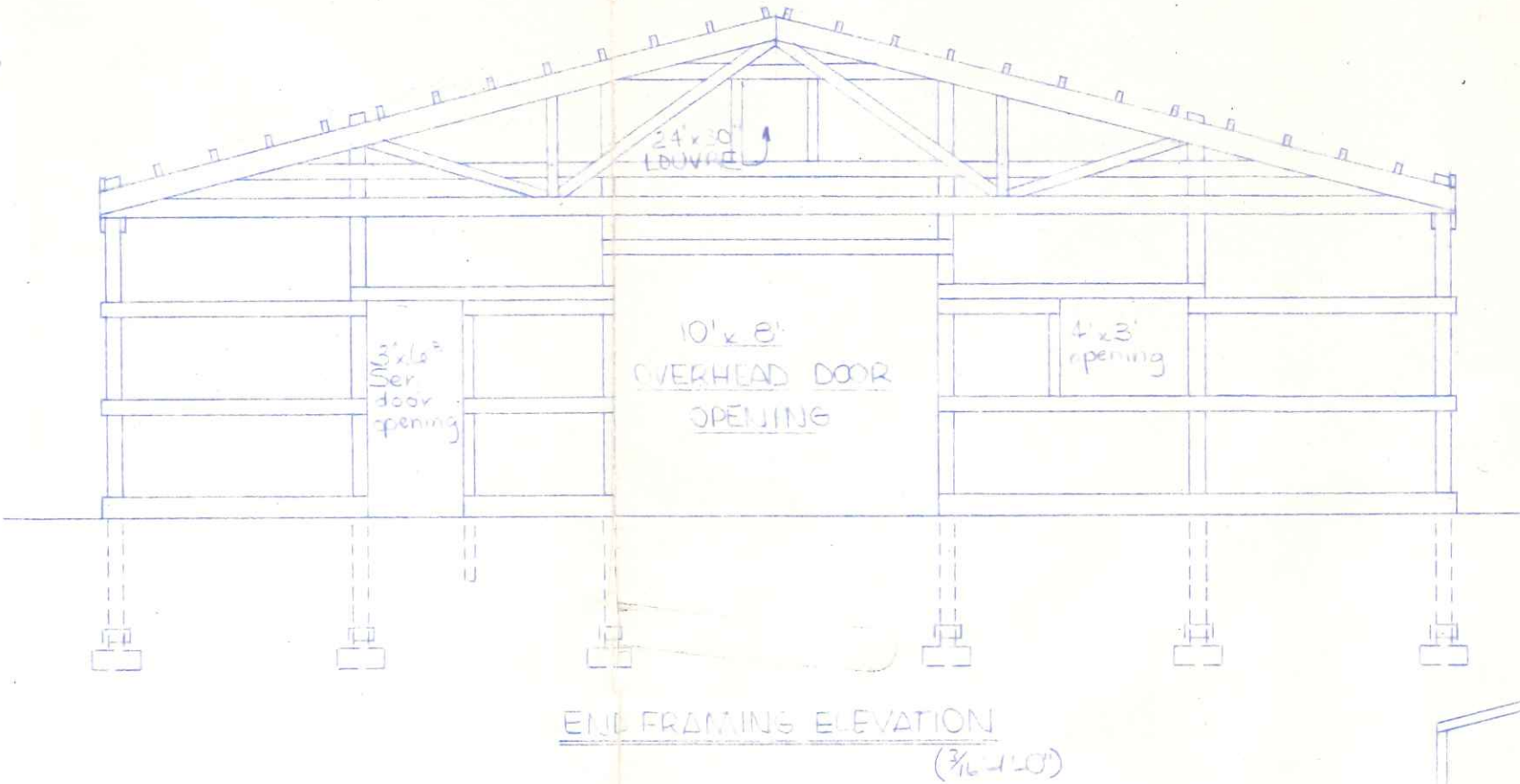


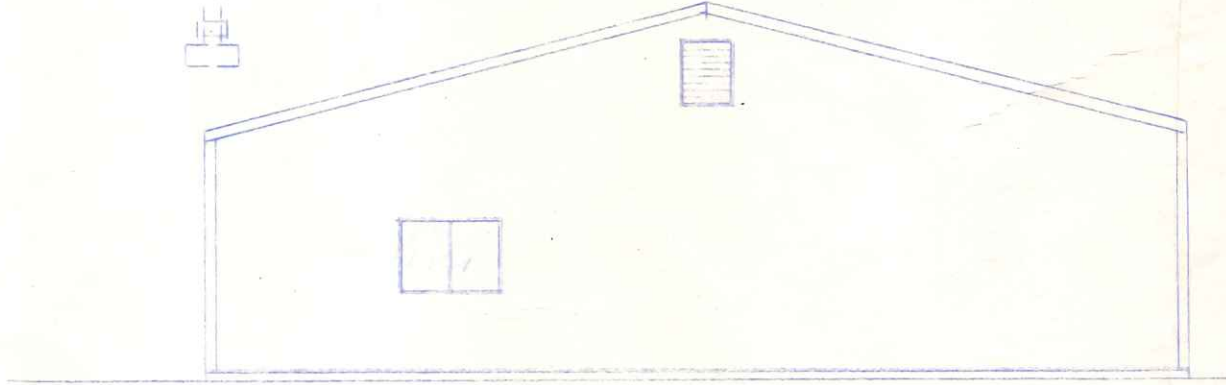
PLAN  
(1/8"=1'-0")

NOTES:

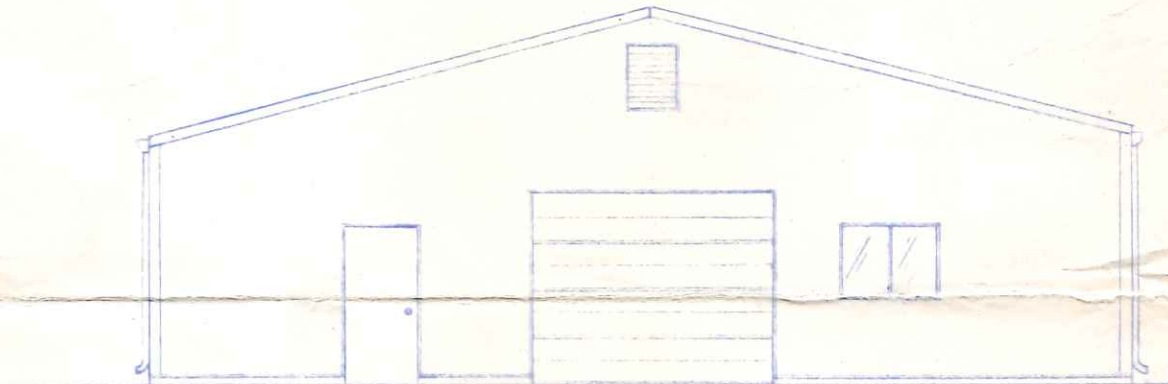
1. DESIGN LOAD = 25 psf LIVE + 5 psf DEAD
2. DESIGN SNOW CAPACITY = 3000 psf
3. ROOFING: PLAIN ALUMINUM
4. SIDING: COLORED ALUMINUM
5. LOUVRES: (2) 24" x 30" IN GABLES
6. TRUSSES & TIMBERS  $f_b = 1300$  psf,  $f_c = 775$  psf, EUDICOTS  $f_b = 1650$  psf, GIRTS & PURLINS  $f_c = 1100$  psf
7. ALL EXIT DOORS TO HAVE TYPE 'B' EXIT HAPLVARE.
8. NAILS & STRUCTURAL MEMBERS TO BE WIDE HARDENED.
9. METAL SIDING TO BE BRACKETED WITH 3/8" x 2" SINTER ROD AND LAPPED SECURELY TO SIDING.
10. MINIMUM OF (2) TYPE 4 BC CARRYN LIDVIDE FIRE EXTINGUISHERS REQUIRED.
11. BUTTER: 80' TOTAL WITH (1) DOWNSPOUT EACH SIDE.



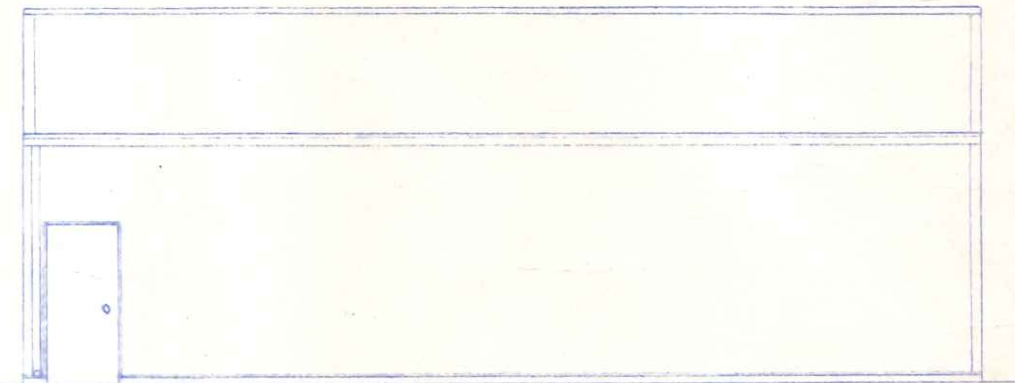
END FRAMING ELEVATION  
(3/16"=1'-0")



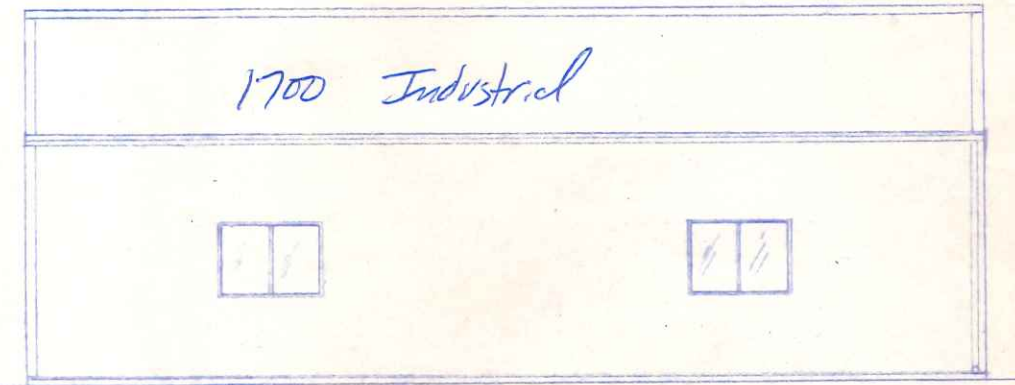
NORTHEAST ELEVATION



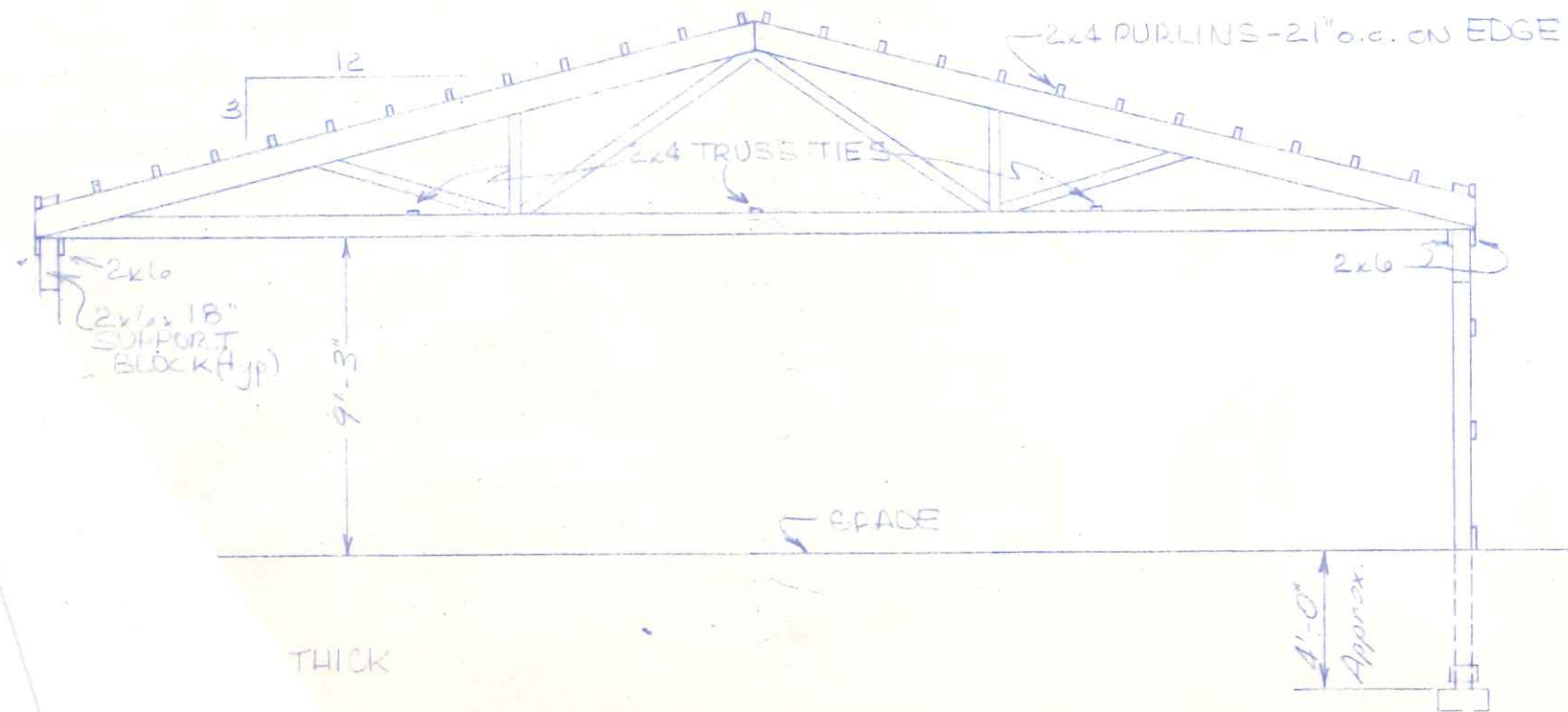
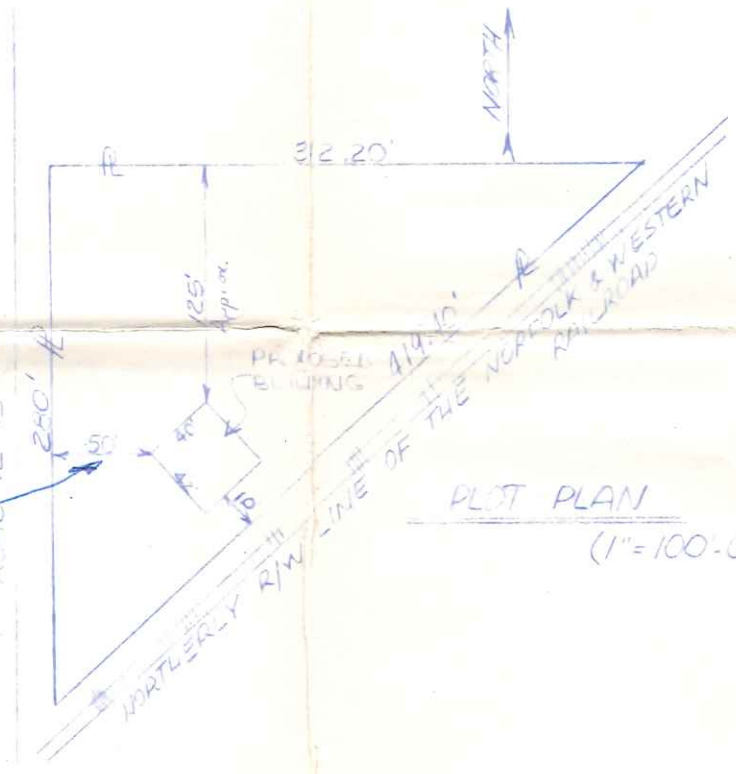
SOUTHWEST ELEVATION



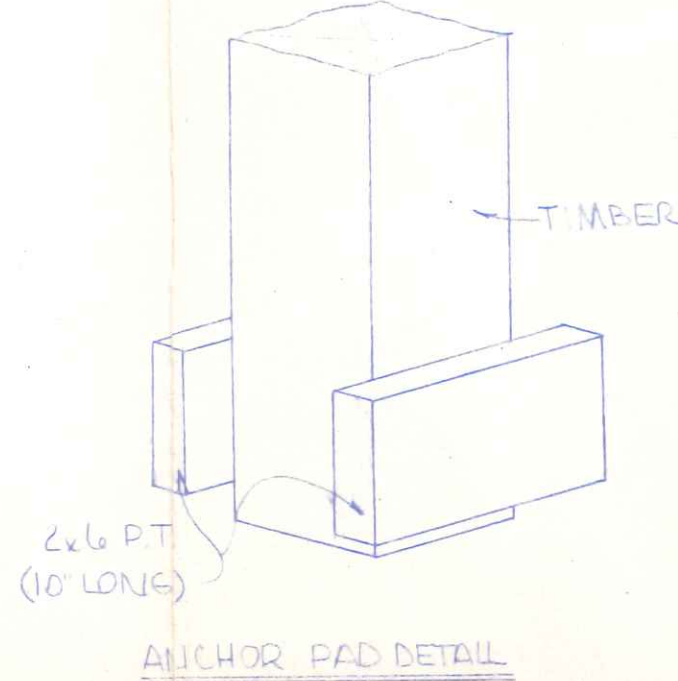
NORTHWEST ELEVATION



SOUTHEAST ELEVATION



CROSS SECTION  
(3/16"=1'-0")



ANCHOR PAD DETAIL

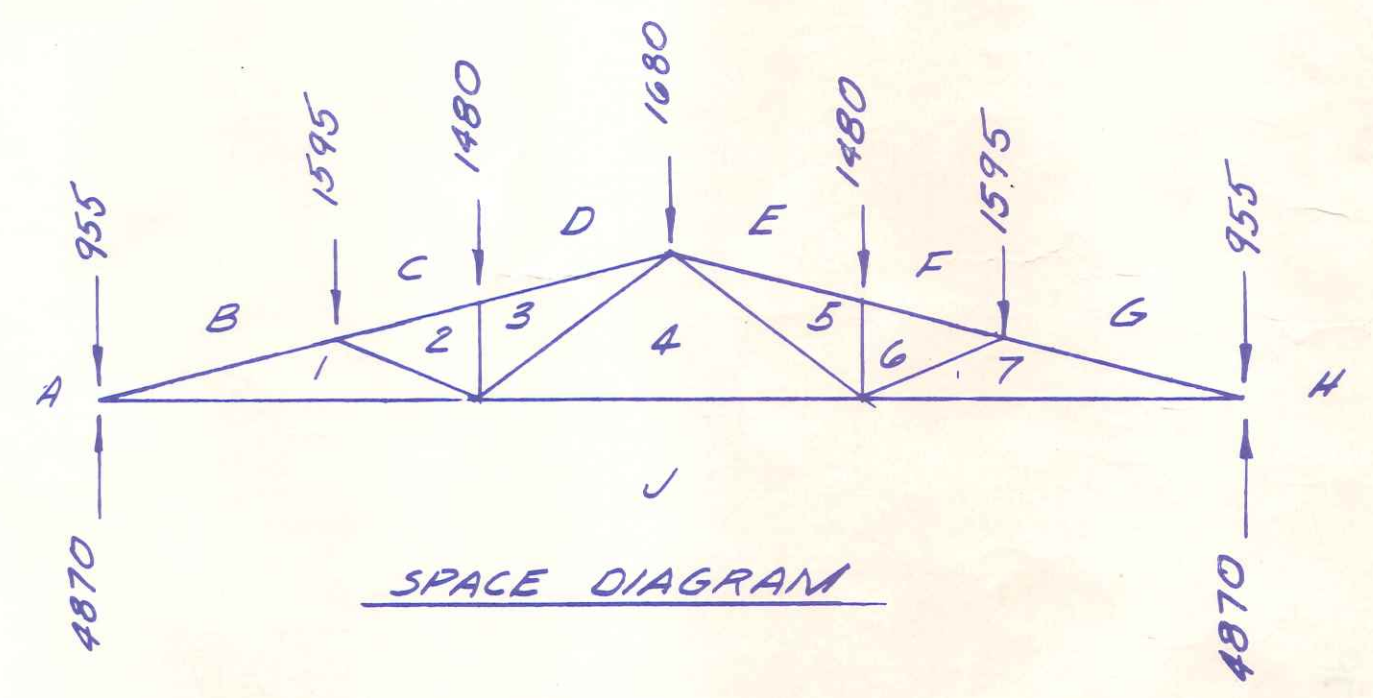
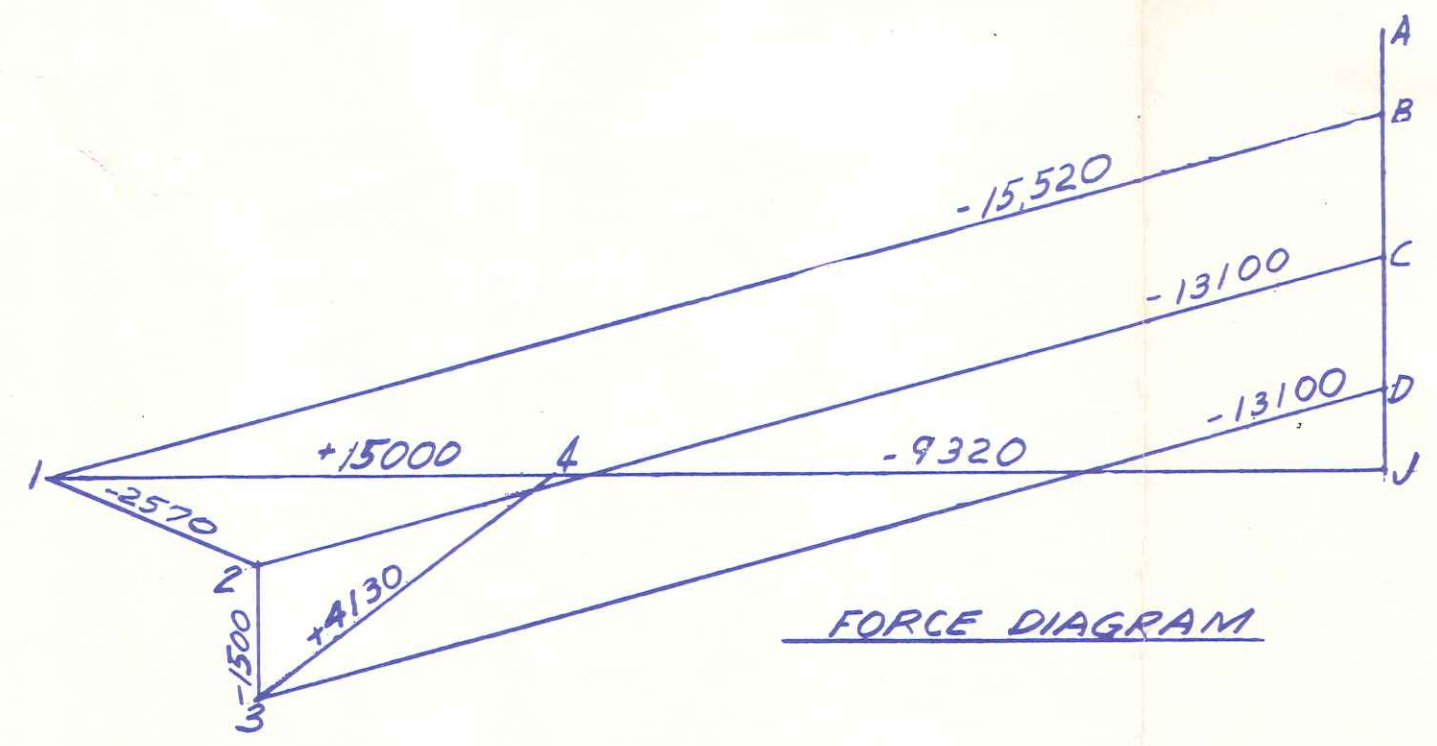
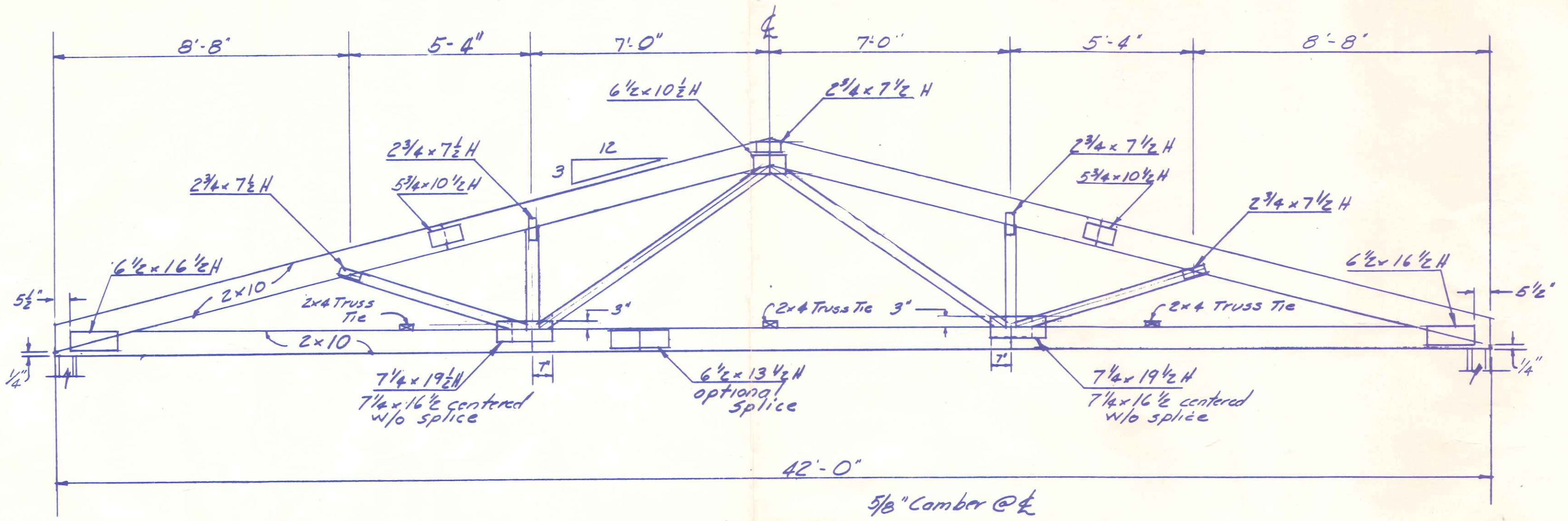


**Wickes Buildings**  
A DIVISION OF THE WICKES CORPORATION

42' x 40' MANUFACTURING BUILDING  
FOR  
DONALD M. & PAULINE C. MORFORD  
NAPOLEON, OHIO

APPROVED BY: [Signature]	REVISIONS:	DRAWN BY: ERICHER	JOB NO. 75203
DATE: 7-8-75	REVISIONS:	SCALE: VARIES	SHEET OF 11





**NOTES**

- 1) Connector Plates shall be placed on both sides of truss joint and centered unless otherwise noted
- 2) Designed in accordance with the latest revisions of the "National Design Specification for Stress Grade Lumber and Its Fastenings" N.L.M.A. and the latest revisions of the "Design Specifications for Light Metal Plated Connected Wood Trusses", T.P.I.

**DESIGN LOAD**

TRUSS SPACING	EQUIVALENT LOADING		
	TOP CH'D LIVE	TOP CH'D DEAD	TOTAL LOADING
8'-0" O.C.	25.0 P.S.F.	5.0 P.S.F.	30.0 P.S.F.
5'-4" O.C.	40.0 P.S.F.	5.0 P.S.F.	45.0 P.S.F.
4'-0" O.C.	55.0 P.S.F.	5.0 P.S.F.	60.0 P.S.F.

All Bottom Ch'ds Load = 0 p.s.f.

**LUMBER**

Top Chord - No. 1KD So. Pine }  $f_b = 1650 \text{ psi}$ ,  $f_c = 1450 \text{ psi}$   
 Bottom Ch'd - No. 1KD So. Pine }  $f_t = 1100 \text{ psi}$   
 Webs 2x4 No. 2KD MG or better

**CONNECTOR PLATES**

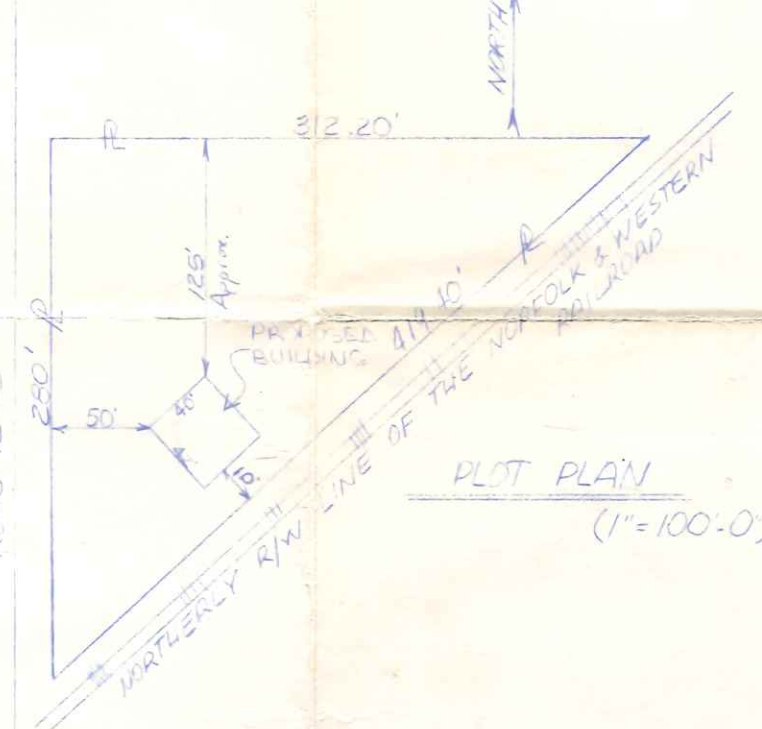
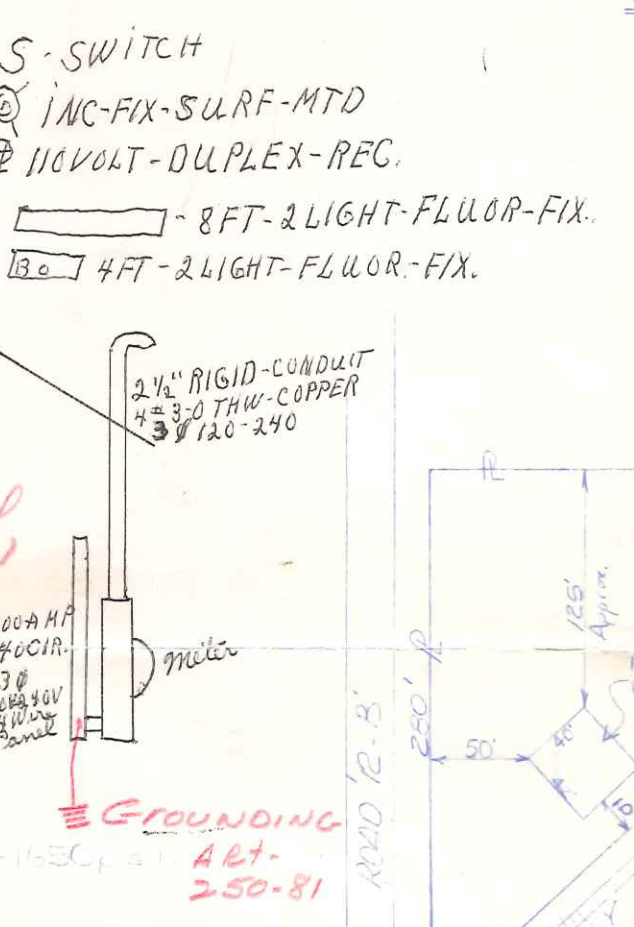
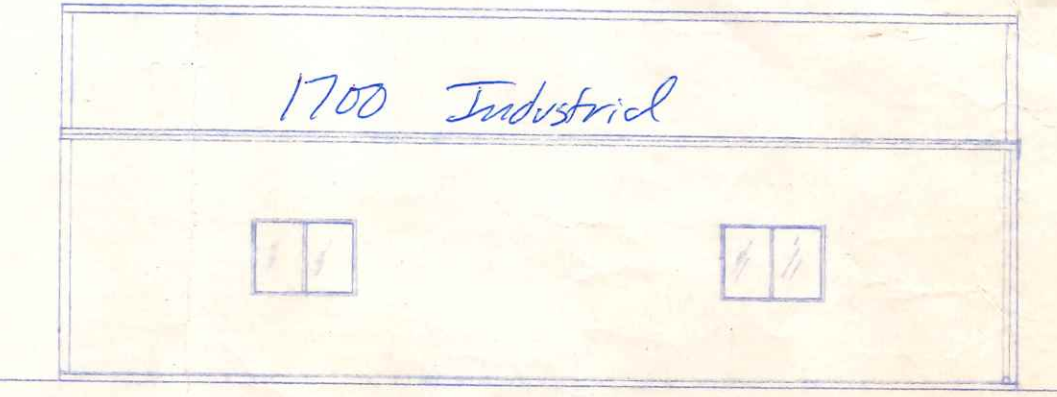
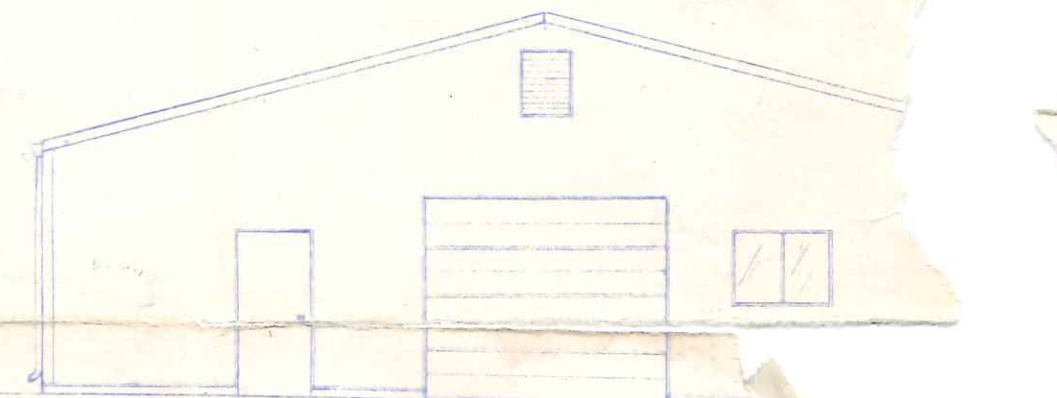
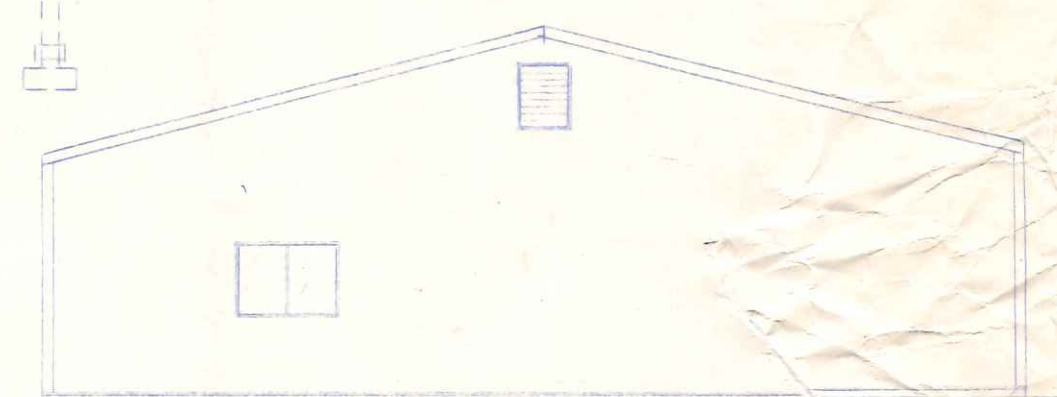
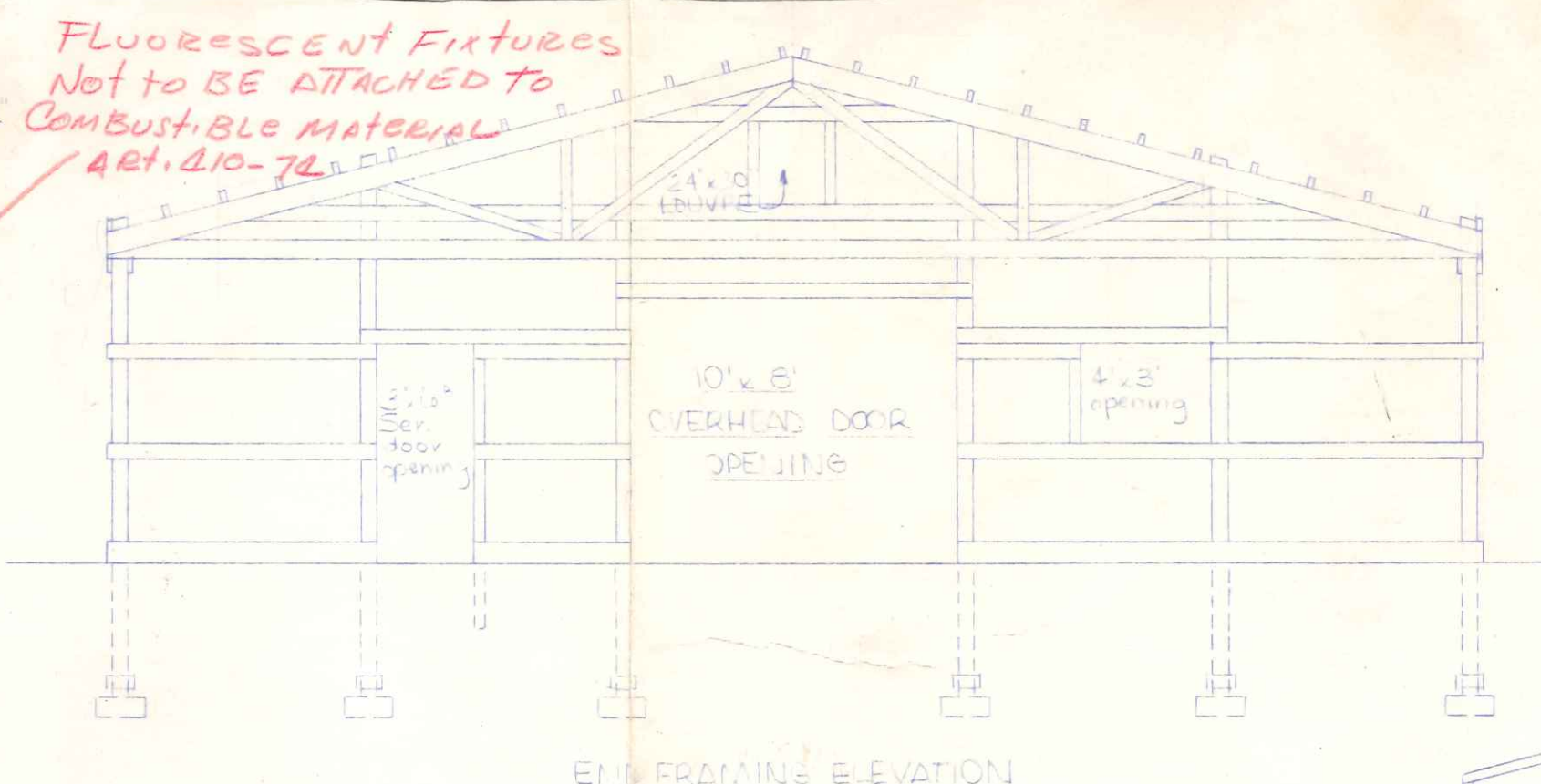
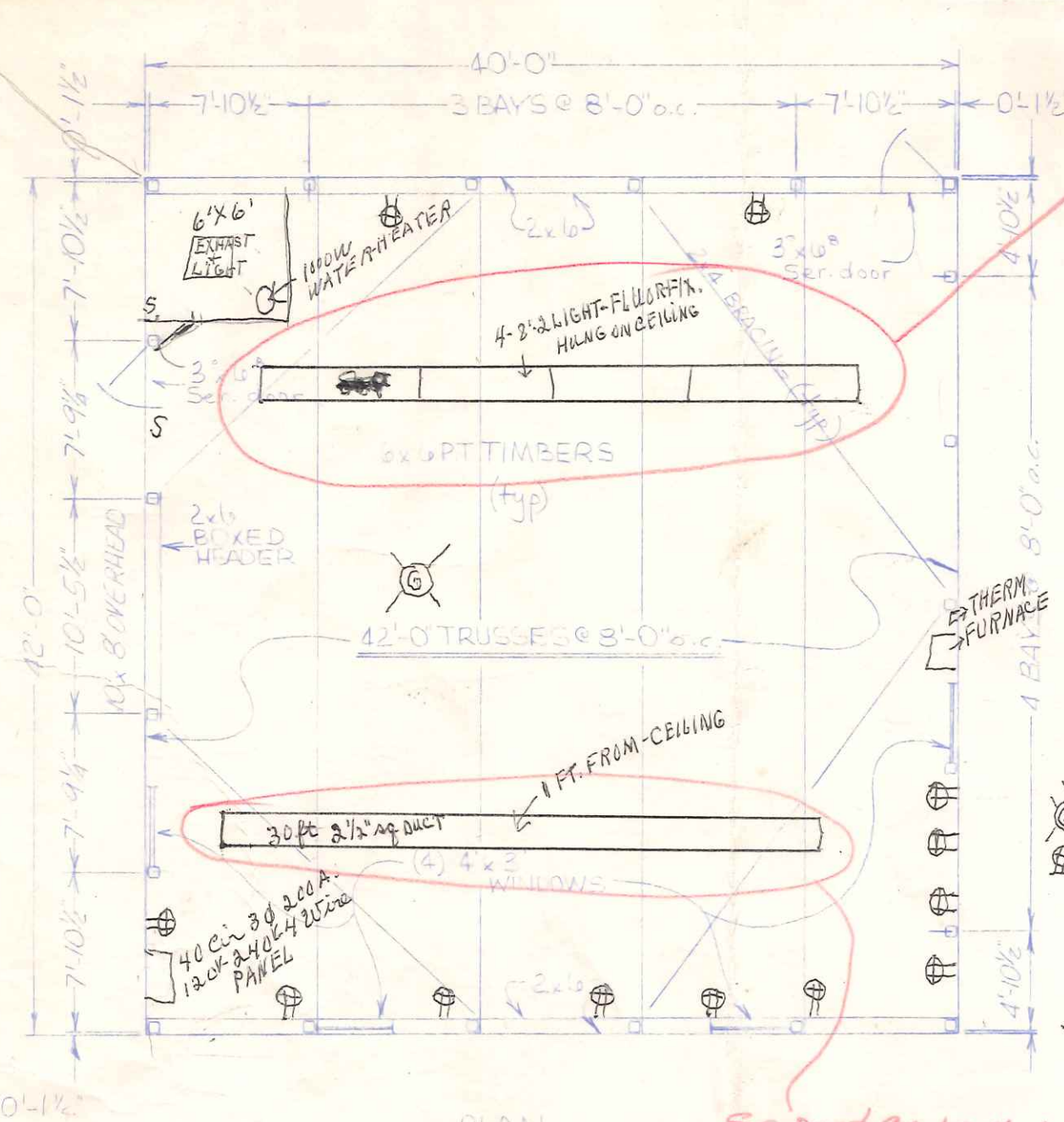
Hydro-Nail "H" heavy duty - 16 ga. Rated 160 psi or 94#/Tooth



**"B" SERIES TRUSSES**

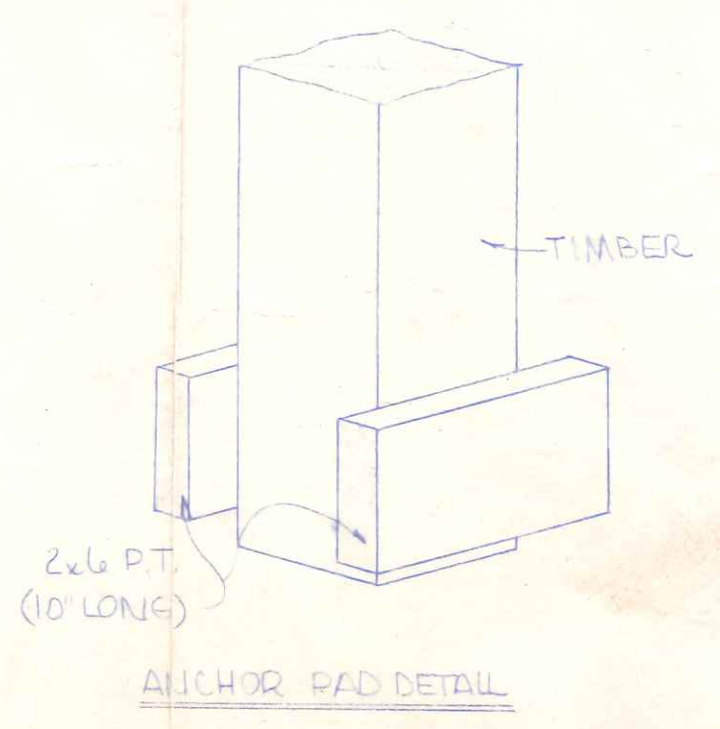
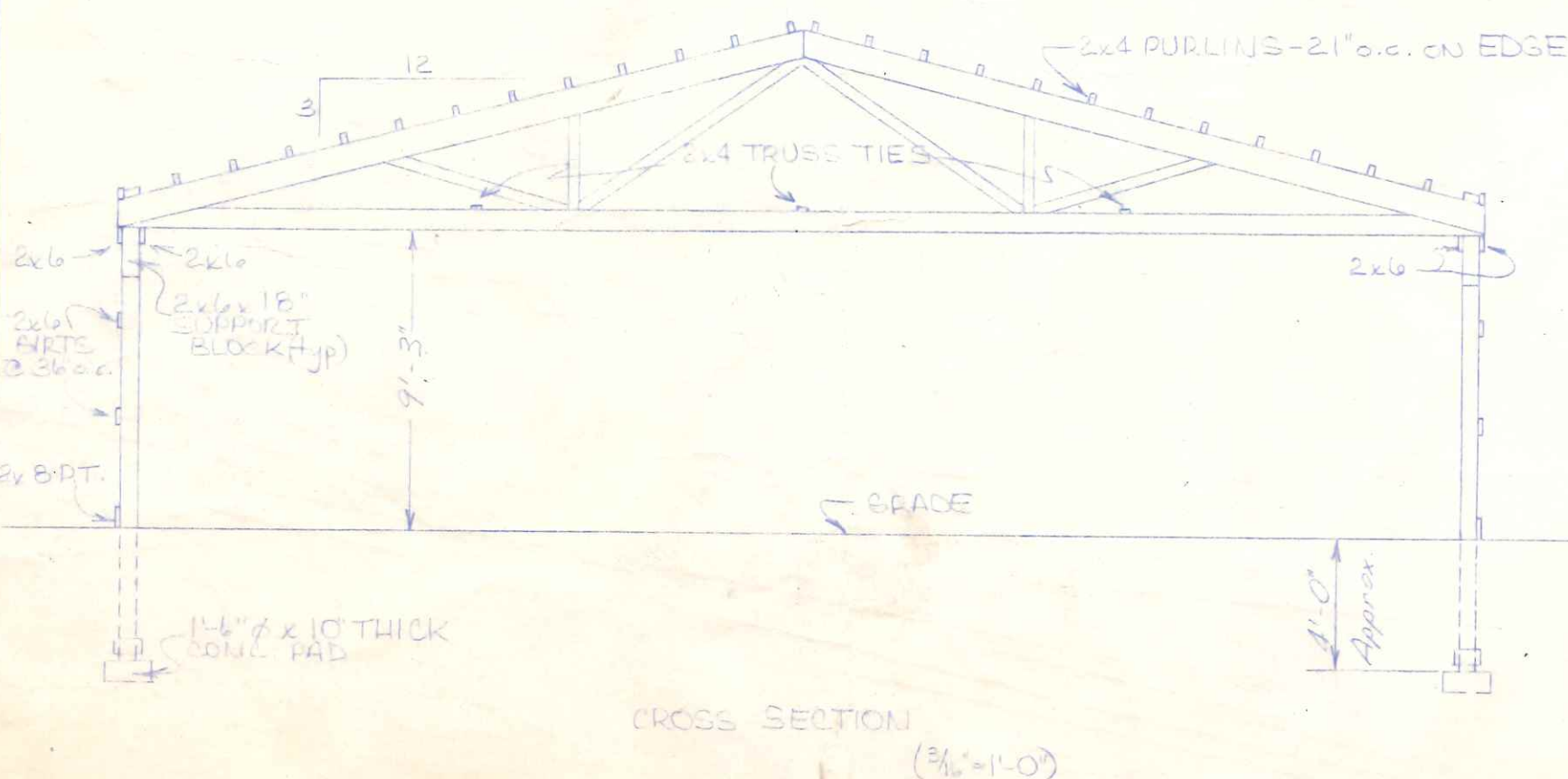
APPROVED BY:	REVISION:	DRAWN BY: G. J. E	JOB NO.
DATE: 10/1/73	REVISION:	SCALE:	SHEET OF





Approved  
8-9-75  
N.H.

- NOTES:
- DESIGN LOAD =  $25 p_s + LIVE + 5 p_s + DEAD$
  - DESIGN SOIL CAPACITY = 3000 p.s.f.
  - ROOFING: PLAIN ALUMINUM
  - SIDINGS: COLORED ALUMINUM
  - LD. VRES - (2) 24" x 30" IN GABLES
  - TRUSSES - TIMBERS  $f_c = 1300$ ,  $f_t = 775$ ,  $E = 2,000,000$ ;  $f_c = 1150$ ,  $f_t = 775$ ,  $E = 2,000,000$ ; GATS & PURLINS  $f_c = 1100$ ,  $f_t = 775$ ,  $E = 2,000,000$
  - ALL EXIT DOORS TO HAVE TYPE 'P' EXIT HARDWARE.
  - MAIN & JOINT LUMBERS TO BE WASH HARDENED.
  - 1/2" TIN SIDING TO BE SECURED WITH 1/2" x 2" EXTERIOR RODS AND LAGS SECURELY TO SILLIS.
  - MINIMUM (2) TYPE 4BC JARREN LIQUIDE FIRE EXTINGUISHERS REQUIRED.
  - GUTTER - 20' TOTAL WITH (1) DOWNSPOUT EACH SIDE.



	<b>Wickes Buildings</b> A DIVISION OF THE WICKES CORPORATION	
	42' x 40' MANUFACTURING BUILDING FOR DONALD M. & PAULINE C. MOREFORD NAPOLEON, OHIO	
APPROVED BY: [Signature] DATE: 7-8-75	REVISED: [Blank] REVISED: [Blank]	DRAWN BY: ERICHER SCALE: VARIES JOB NO.: 203 SHEET: 1